

THOMPSON'S  
ALDEBURGH



ANDREW TOZER

A. TOZER





## Impressions of Cornwall

**Andrew Tozer** comes from a Cornish farming family and for as long as he can remember he loved being in the open air and being ensconced in nature. He spent hours roaming cliffs, beaches, woodland and creeks and was drawn to painting this backdrop as well as being inspired by his mother who was also an artist. At the age of 19 he moved to London to study art at the University of Westminster and then went on to Central St. Martin's School of Art. Whilst being away in London he learnt to consolidate his love of painting en plein air featuring the Thames, Richmond and Kew, and after moving back to Cornwall five years later in 1998 he quickly established a good reputation with many sell-out exhibitions with his beautiful and evocative landscapes and interiors.

The subject matter he chooses and is attracted to has the ability to transport him to a magical place and he tends to paint things that hold strong memories for him; a picnic on a beautiful beach, a vase of fresh flowers arranged by his wife or watching a sunset at St Ives after a long day spent playing in the sea. He is inspired by artists such as Raoul Dufy, Marc Chagall, Paul Mazer, Winifred Nicholson and Henri Matisse. All have the ability to transport the viewer to a beautiful world transcending the harsher realities of this one. Their work seeks to evoke a feeling of content, to which they hope at some point to be able to return to. Andrew is keen to keep his paintings fresh and lively and keeps his colours bold and unfussed, the canvas free from being overworked.

*Spring Morning,  
Helford Passage*  
Acrylic on board  
18 x 24 inches



# ANDREW TOZER

Opens Saturday 24th April - 9th May 2021

THOMPSON'S  
ALDEBURGH

175 High Street, Aldeburgh  
Suffolk. IP15 5AN

Tel: +44 (0)1728 453 743

john@thompsonsgallery.co.uk

[www.thompsonsgallery.com](http://www.thompsonsgallery.com)

Monday to Friday: 10am - 5pm

Saturday: 10am - 5pm

Sunday 11am-5pm

All paintings are for sale on receipt of this catalogue.  
More works can be viewed on our website  
[www.thompsonsgallery.com](http://www.thompsonsgallery.com)





*Evening Light, St Ives* Acrylic on board 12 x 18 inches



*Summer Afternoon, Mousehole* Acrylic on board 12 x 16 inches





*A Golden Evening, St Mawes* Acrylic on board 12 x 16 inches



*Evening Light at the Stables* Acrylic on board 12 x 16 inches



*Bedtime Stories* Acrylic on board 18 x 24 inches





*Sparkling Waters, St Mawes* Acrylic on board 20 x 30 inches



*A Cornish Spring* Acrylic on board 12 x 16 inches

*Morning at St Mawes* Acrylic on canvas 36 x 48 inches (left)





*Sails off Port Navas* Acrylic on board 18 x 24 inches



*Sails on the Helford River* Acrylic on board 24 x 32 inches



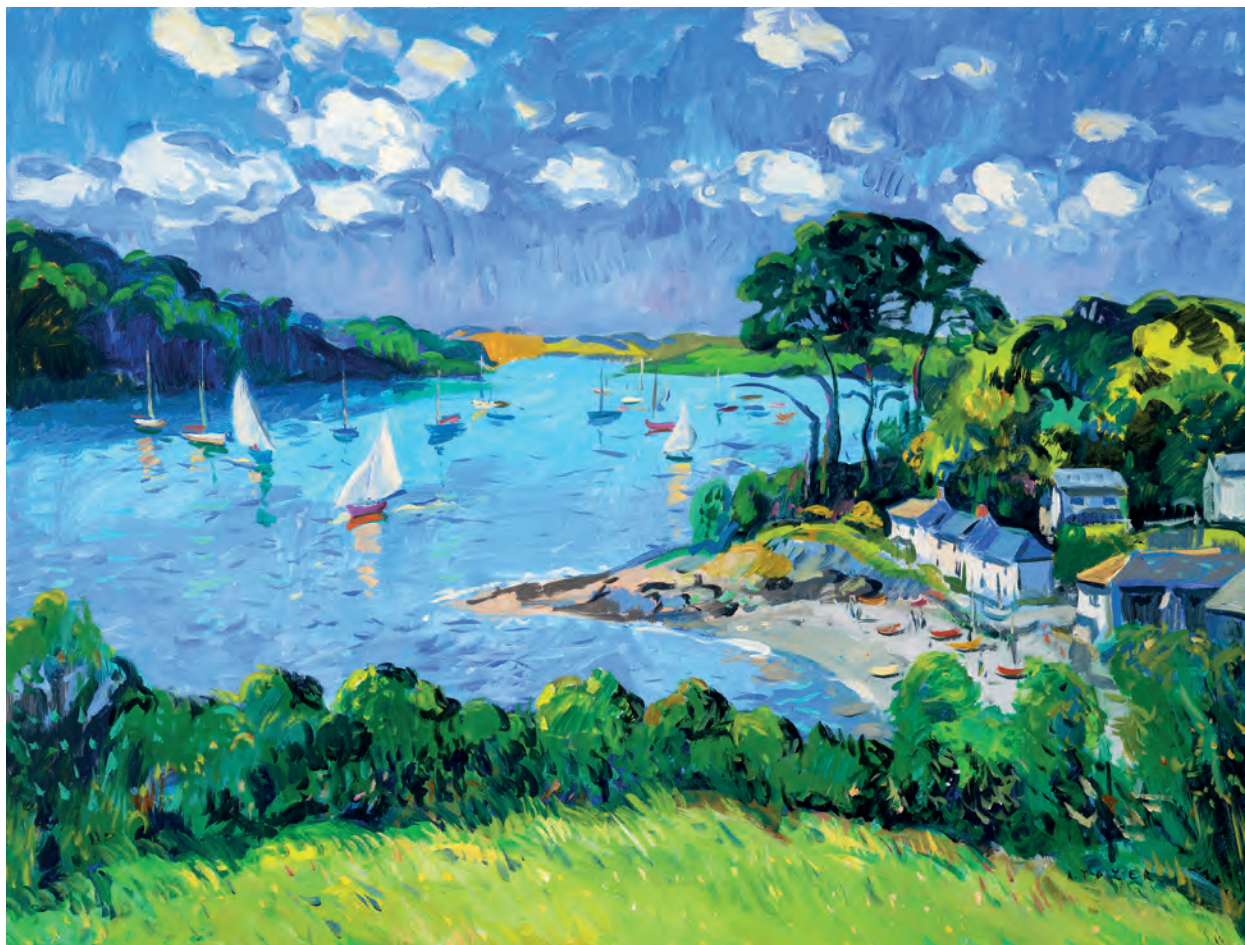


*Spring Breeze* Acrylic on canvas 24 x 32 inches



*Morning Colours, Helford Passage Beach* Acrylic on canvas 24 x 32 inches





*Morning Sunshine, Helford Passage* Acrylic on canvas 36 x 48 inches



*Trafalgar Square, Hazy Light* Acrylic on board 18 x 24 inches





*Through the Pines to the Helford River* Acrylic on board 12 x 16 inches

*Summertime, Helford Village* Acrylic on board 24 x 32 inches (front cover)

THOMPSON'S  
ALDEBURGH

175 High Street, Aldeburgh, Suffolk. IP15 5AN  
Tel: 01728 453 743 Email: [john@thompsonsgallery.co.uk](mailto:john@thompsonsgallery.co.uk)

3 Seymour Place London W1H 5AZ Tel: +44 (0)207 935 3595  
Email: [enquiries@thompsonsgallery.co.uk](mailto:enquiries@thompsonsgallery.co.uk)

own art

[www.thompsonsgallery.com](http://www.thompsonsgallery.com)

