

(Front) View from the Park, Windsor  
Oil 18 x 24 inches



*Dot and Trixie*  
Bronze Ed. 6/6 19 x 17 inches

**THOMPSON'S**  
MARYLEBONE

15 New Cavendish Street, London. W1G 9UB Tel: +44 (0)20 7935 3595  
Email: [enquiries@thompsonsgallery.co.uk](mailto:enquiries@thompsonsgallery.co.uk)

175 High Street, Aldeburgh, Suffolk. IP15 5AN Tel: +44 (0)1728 453 743  
Email: [john@thompsonsgallery.co.uk](mailto:john@thompsonsgallery.co.uk)

[www.thompsonsgallery.com](http://www.thompsonsgallery.com)



**THOMPSON'S**  
MARYLEBONE

*Westminster from  
the Thames*  
Oil 16 x 20 inches



**THOMPSON'S**  
MARYLEBONE

15 New Cavendish Street,  
London. W1G 9UB  
Tel: +44 (0)20 7935 3595  
enquiries@thompsonsgallery.co.uk  
www.thompsonsgallery.com  
Monday to Friday: 10am-6pm  
Wednesday: 10am-7pm  
Saturday: 10.30am-5.30pm  
Sunday: 11am-5pm

# SIMEON STAFFORD

An Exhibition of New Paintings

10th – 27th March 2011.

Late Night Opening Wednesday 9th March until 7pm

All paintings are for sale on receipt of this catalogue. Please visit our website to view the entire exhibition online from 28th February. [www.thompsonsgallery.com](http://www.thompsonsgallery.com)

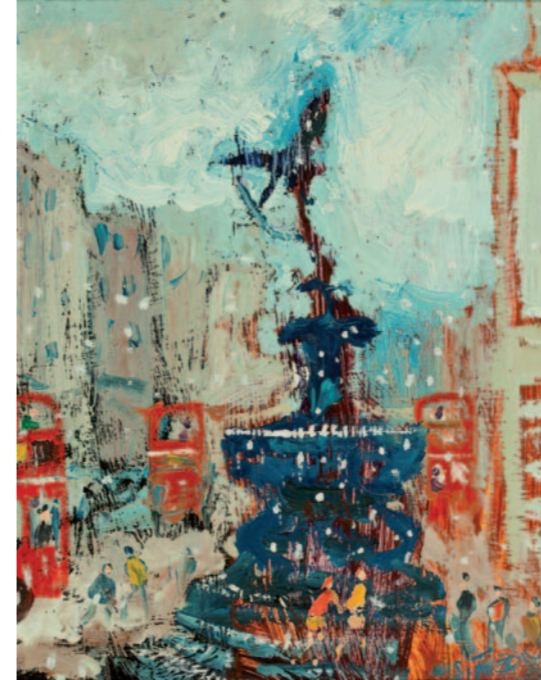
# SIMEON STAFFORD



Simeon Stafford was born in Duckenfield, near the Pennines, in 1956. Stafford was raised in the Manchester area and as a teenager he was encouraged to paint by a customer at his mother's greengrocery shop - that customer was in fact the legendary northern painter L. S. Lowry.

His career started early and aged 14 he won the Robert Owen Schools Award for Art and also the Manchester Evening News' Portrait Award. Stafford had often exhibited his childhood paintings in mixed exhibitions at the Central Art Gallery, Ashton-under-Lyne. By 1974 he was exhibiting prolifically in the North of England and in London, including the Royal Academy Summer Exhibition.

Alongside Thompson's Gallery's exhibition of Simeon Stafford's new paintings, the Central Art Gallery at Ashton-under-Lyne will be displaying a collection of works donated by the artist.

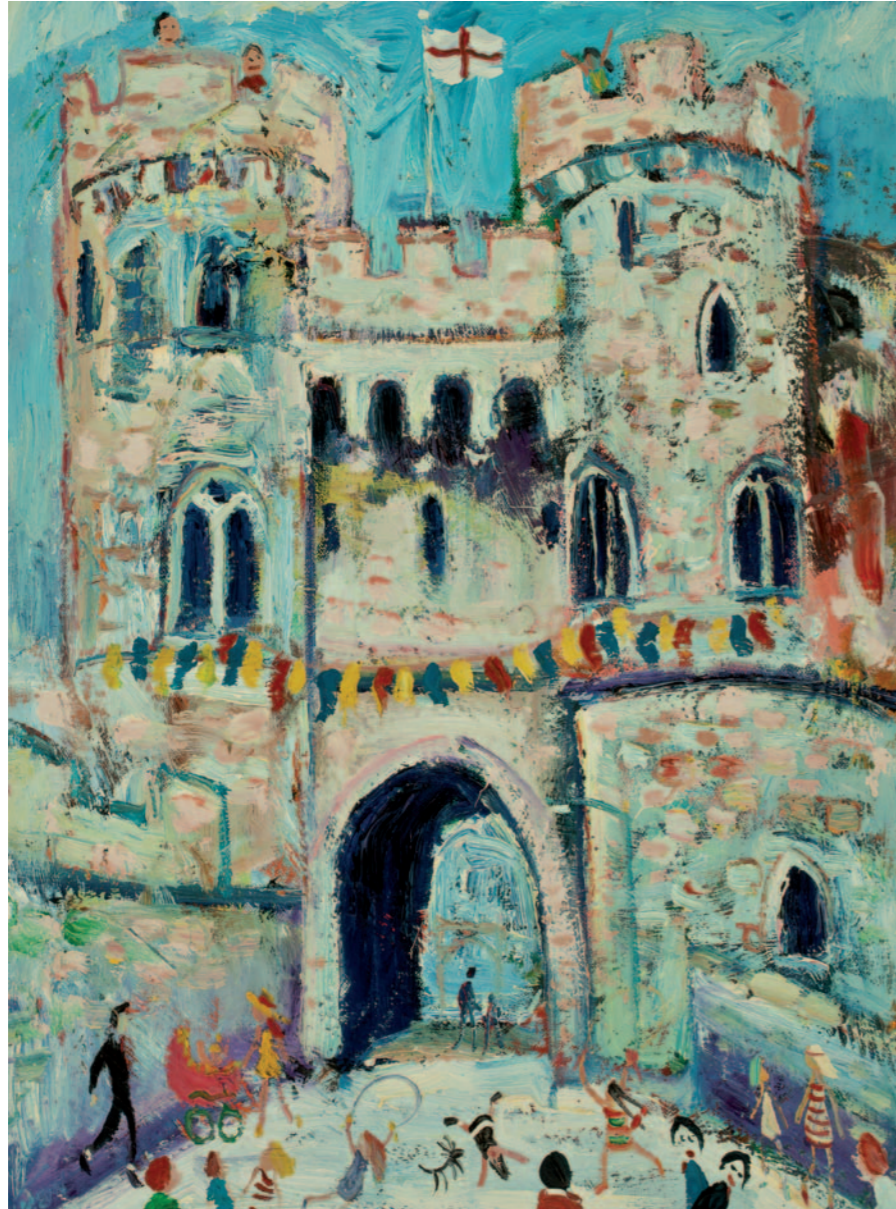


*Bus to Marylebone* Oil 20 x 47 inches (left)

*Blue Eros* Oil 8 x 10 inches (above left)

*Father's Day* Oil 40 x 30 inches (above right)





*Windsor Castle* Oil 24 x 18 inches (left)

*St Paul's* Oil on board 18 x 24 inches (right)



*The Farmer's Cart* Oil 5 x 7 inches



*Running for the Bus* Oil 10 x 8 inches (right)



*Dads Day Off* Oil 20 x 30 inches



*Westminster Bridge* Oil 20 x 47 inches



*Playtime* Oil 10 x 8 inches

*Mother's Day* Oil 40 x 30 inches (right)





*Boats Returning* Oil 12 x 16 inches

*Boat on the Beach* Oil 8 x 10 inches (right)







*Ring-a-ring-a-roses* Oil 8 x 10 inches



*The Roundabout* Oil 8 x 10 inches

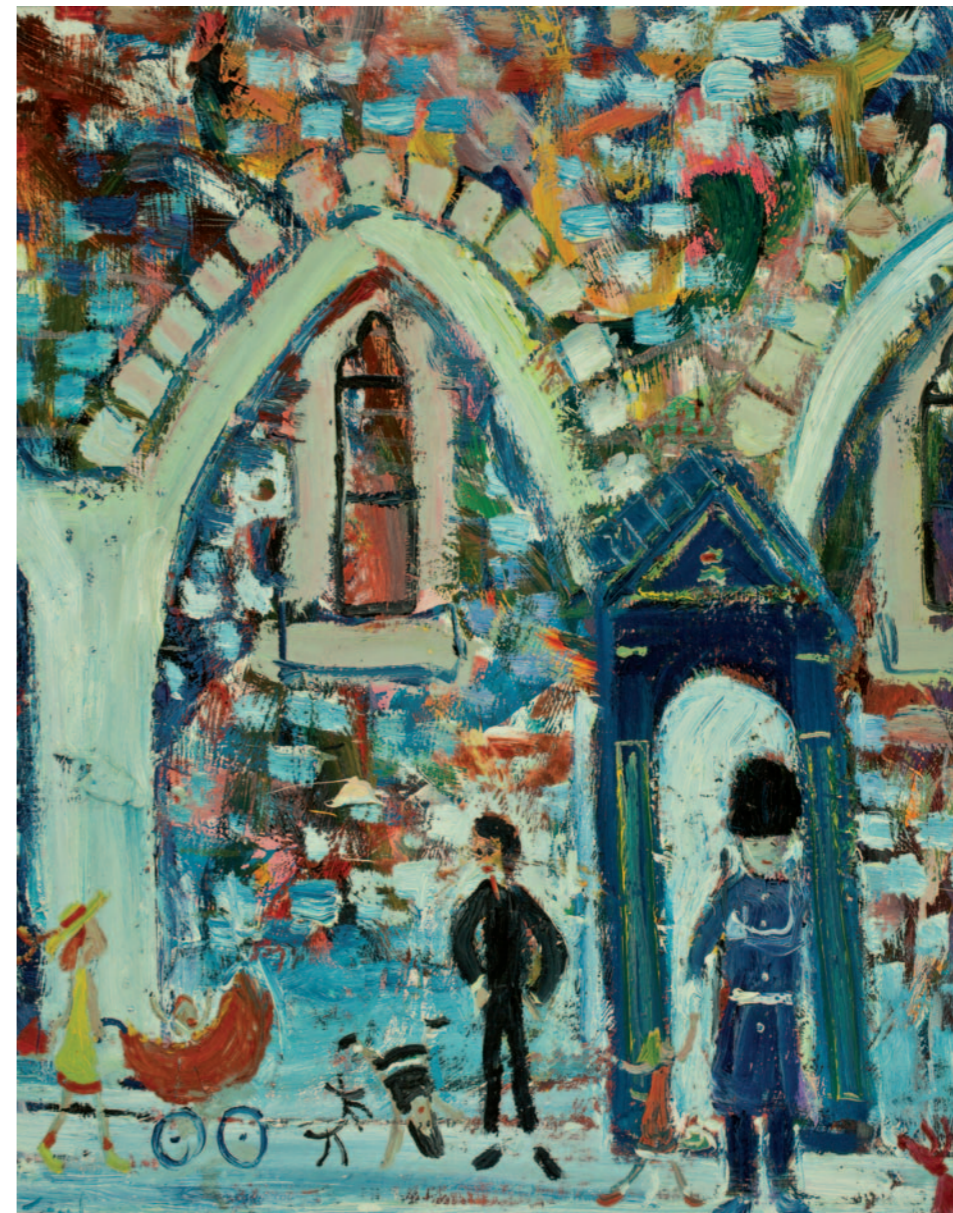


*Country Fair* Oil 8 x 10 inches (bottom left)

*Sunday Fair* Oil 8 x 10 inches (right)



*On Guard, Windsor Castle* Oil 20 x 16 inches (far right)





*Mounts Bay Boat Race* Oil 20 x 30 inches

Design: Herring Bone Design Ltd.  
Photographer Angelo Plantamura  
Printed by Fullers - Davies Ipswich