

THOMPSON'S  
LONDON EST. 1982



THEMBALETHU  
MANQUNYANA



# THEMBALETHU MANQUNYANA

## ETHNIC RIDDLES

17th May - 3rd June 2023

In January 2021, Thompson's Gallery presented six bold and exciting artworks by Thembaletu Manqunyana in our Contemporary South Africa exhibition. Then as now, we have been bowled over by the artist's originality and breadth of vision, which comprises an intricate visual lexicon of colours and forms. Manqunyana has drawn influence from Cubism and Neo-Expressionism, as well as the powerful imagery of Jean-Michel Basquiat, whilst appropriating motifs derived from his own lived experiences. Manqunyana's highly personalised approach has captured the attention of admirers and collectors the world over. We are therefore thrilled to debut 22 new and unseen paintings in what will be Manqunyana's first ever solo exhibition in the UK.

*Ethnic Riddles* pays particular attention to Manqunyana's tribal background of IsiXhosa. The artist's use of bold colour and disjointed fragments are reminiscent of many things that are African and not only signify his background. His style creates a visual dialogue which is intended to mark the growth that also instigates a departure from established identities. These variations of colour and images signify the inequalities and differences from a South African idiom towards a universal palette. He also creates emphasis around fusing ethnic symbols, sometimes his compositions are inspired by West African masks through multiplications of colours and imagery.

Thembaletu Manqunyana hails from Kwazakhele in Gqeberha, previously known as Port Elizabeth, South Africa. He discovered his passion for art at a very young age and harnessed his skills of painting throughout his childhood and adolescent stage. He pursued his dreams by studying Arts and Design at Port Elizabeth College from 2005-2006. Thereafter Fine Art (Sculpture) at Nelson Mandela University from 2007-2011. Thembaletu then proceeded with his art studies at Rhodes University from 2012-2013 attaining a Bachelor's degree of Fine Arts in Politics, Psychology, Art History, Visual Culture and Xhosa.

The entire exhibition can be viewed in person and online.  
For more information please visit our website, [www.thompsonsgallery.co.uk](http://www.thompsonsgallery.co.uk)

All works are for sale upon receipt of this catalogue.

THOMPSON'S  
LONDON EST. 1982

3 Seymour Place,  
London. W1H 5AZ  
Tel: +44 (0)207 935 3595  
Email: [enquiries@thompsonsgallery.co.uk](mailto:enquiries@thompsonsgallery.co.uk)  
[www.thompsonsgallery.co.uk](http://www.thompsonsgallery.co.uk)

Monday to Friday: 10:00 - 18:00  
Saturday: 10:30 - 17:30  
Sunday: Closed



Africa Queen Mixed media on paper 40 x 33 inches



Me, Myself and I - IV Mixed media on canvas 20 x 14.5 inches



Me, Myself and I - III Mixed media on canvas 20 x 14.5 inches



Touch is Move Mixed media on canvas 37 x 36 inches (above)

The Horse Mixed media on canvas 37 x 36 inches



The Brain  
Mixed media on canvas  
59 x 59 inches (right)

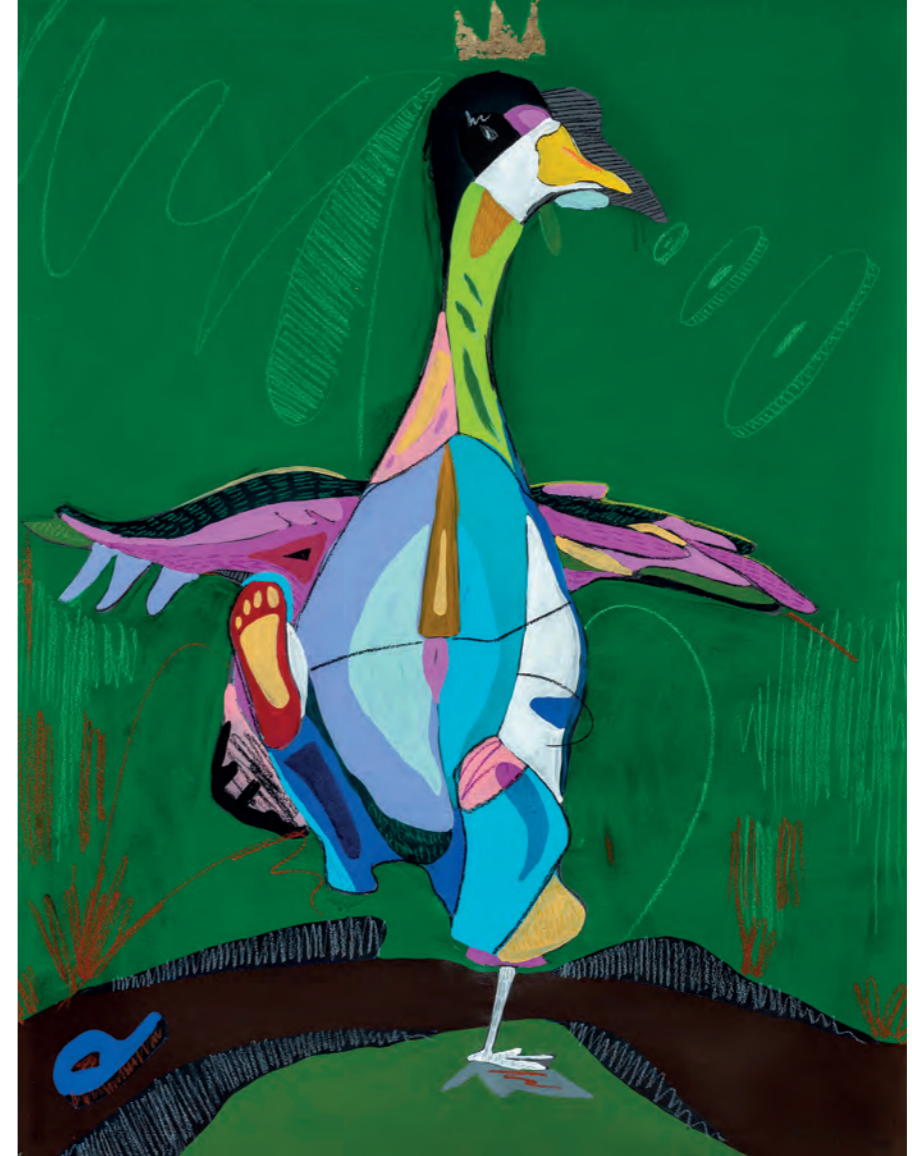




Jazz Man Mixed media on paper 40 x 30 inches



Gucci Man Mixed media on paper 40 x 30 inches



Move Forward Mixed media on paper 51 x 39 inches



Mother Nature Mixed media on paper 40 x 33 inches



Goddess Mixed media on paper 40 x 33 inches



Red  
Mixed media on paper  
40 x 30 inches

THOMPSON'S LONDON

3 Seymour Place,  
London. W1H 5AZ  
Tel: +44 (0)207 935 3595  
Email: [enquiries@thompsonsgallery.co.uk](mailto:enquiries@thompsonsgallery.co.uk)  
[www.thompsonsgallery.co.uk](http://www.thompsonsgallery.co.uk)

THOMPSON'S ALDEBURGH

175 High Street, Aldeburgh.  
Suffolk. IP15 5AN  
Tel: +44 (0)1728 453 743  
Email: [john@thompsonsgallery.co.uk](mailto:john@thompsonsgallery.co.uk)

THOMPSON'S HARPENDEN

13 Church Green,  
Harpenden. AL5 2TW  
TEL: +44 (0)1582 329 932  
Email: [harpندن@thompsonsgallery.co.uk](mailto:harpندن@thompsonsgallery.co.uk)